

WHAT IS INCLUDED

Badger Daylighting has outlined roles and responsibilities within their EPP plan. This will result in the commitment and support of all workers and employers critical to the plan's success in the event of an emergency.

- ✓ Incident Commander
- ✓ Safety
- ✓ Customer Liaison
- ✓ Operations/Dispatching Planning
- ✓ Logistics/Fleet
- ✓ Administration/Operations Support
- ✓ Emergency Operations Center (Command Center)
- ✓ Fleet Support Trailer
- ✓ Safety Supplies and Material Support Trailer



SAFETY

TIME IS MONEY

PRECISE EXCAVATION

EXCAVATE THROUGH FROZEN GROUND

EXCAVATE IN HARD-TO-REACH AREAS



Emergency Preparedness Plan



Serving our Customers with the Best Trained Operators and the Best Trucks in the Business.

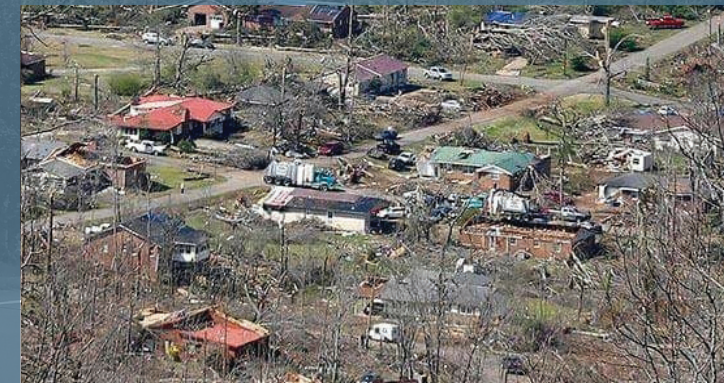
www.badgerinc.com

DID YOU KNOW...?

The Safety supplies and material support trailer is stocked and supplied with essential safety gear and PPE that would be needed for an emergency response, ensuring all personnel have what is required on-site.

// 24-Hour Service

- Western Canada - 1.800.465.4273
- Eastern Canada - 1.877.330.3343
- Eastern & Midwest US - 1.877.322.3437
- West US - 1.866.393.3344
- Pacific US - 1.877.341.2234



DID YOU KNOW...?

The Fleet Support trailer will be utilized to store and distribute spare Badger Unit supplies during an Emergency Response, so associates will not have to leave the job site for additional supplies.



FOUR STAGES OF EMERGENCY MANAGEMENT

1

Mitigation

An effort to reduce or eliminate risks to people or property by lessening the impact of disasters.

2

Preparedness

Establishing goals, guidelines, plans, procedures, protocols, objectives and standards for planning.

3

Response

Actions taken to save lives and prevent further property damage in an emergency.

4

Recovery

Returning to a normal or an even safer situation following an emergency.



BEING PREPARED IS A CONTINUOUS PROCESS

Suddenly and without warning, an emergency can occur at any time. Proper planning is essential to minimize the impact of any emergency – this is where Badger Daylighting can help.

Badger Daylighting's Emergency Preparedness Plan (EPP) does not replace existing emergency procedures but supplements them by defining the relationships between those and other procedures and organizations, to build a unified command structure.

Badger Daylighting's EPP is designed to provide all the tools needed when facilitating an effective, efficient, and coordinated emergency response to significant events affecting your area.

Badger's services are part of CGA's "Best Practice Excavation".

EMERGENCY PREPAREDNESS OVERVIEW



ABOUT BADGER

Badger Daylighting™ is the industry leader in non-destructive hydro excavation services. Since 1992, Badger has been innovating cutting-edge technology and providing services to a diverse customer base including oil and gas, energy, industrial, construction, transportation and other markets, as well as numerous government agencies within the United States and Canada.

For more than 25 years, Badger has been committed to creatively solving our clients infrastructure needs and challenges by delivering a safe and reliable hydroexcavation services.

For more information, visit us at www.badgerinc.com